

SOPHOS

Cybersecurity
made
simple.

Sophos Mobile technical guide (Sophos Central)

product version: 9.6

Contents

About this guide.....	1
Sizing considerations.....	2
Ports and protocols.....	3
EAS proxy architecture examples.....	7
Support.....	10
Legal notices.....	11

1 About this guide

This guide contains information about the integration of Sophos Mobile and the EAS proxy into your organization's infrastructure.

2 Sizing considerations

EAS proxy sizing

You can set up an EAS proxy to control the access of your managed devices to an email server. Email traffic of your managed devices is routed through that proxy. You can block email access for devices, for example a device that violates a compliance rule.

The EAS proxy does not require a lot of CPU or memory, but its key limitation is bandwidth. As the EAS proxy is critical for the delivery of email, for large installations, we recommend you use multiple instances of EAS proxies behind a load balancer. Note that this setup is not required for the PowerShell mode.

Sizing recommendation for EAS proxy: 1 CPU and 2 GB of memory.

Sophos Intercept X for Mobile data usage

Sophos Intercept X for Mobile is a security app for Android devices that protects devices from malicious apps and assists end users in detecting app permissions that could be a security risk. Its web filtering capability allows you to filter websites by category and lets you block inappropriate content.

On devices that have Sophos Intercept X for Mobile installed, the following network traffic occurs:

- On each malware scan, 256 bytes per app are used for online look-ups against the latest threat data in the SophosLabs database.
- For downloading data updates for the antivirus engine, 10-20 KB per day are used on average.

Sophos Chrome Security data usage

Sophos Chrome Security is a security extension for Chrome devices. Its web filtering capability allows you to filter websites by category and lets you block inappropriate content.

On devices that have Sophos Chrome Security installed, the following network traffic occurs:

- On each web page look-up against the SophosLabs database, about 800 bytes are used.

3 Ports and protocols

This section lists the communication details for required and optional network connections.

From the internet to the Sophos Mobile server

Port forwarding, NAT, WAF, Reverse Proxy are supported.

Protocol	Port	Destination	Comment	Optional?
HTTP	80	<Sophos Mobile server>	Forwards to HTTPS port	Yes
HTTPS	443	<Sophos Mobile server>	Access to Sophos Mobile Admin and Self Service Portal, device sync, UTM, NAC	

From the internal network to the Sophos Mobile server

Protocol	Port	Destination	Comment	Optional?
HTTP	80	<Sophos Mobile server>	Forwards to HTTPS port	Yes
HTTPS	443	<Sophos Mobile server>	Access to Sophos Mobile Admin and Self Service Portal, device sync, UTM, NAC	

From the Sophos Mobile server to the Internet

Note

A proxy can be used for this traffic. Make sure it can access the APNs servers and keeps the client certificate for `services.sophosmc.com` intact.

Protocol	Port	Destination	Comment	Optional?
HTTPS with client cert.	443	services.sophosmc.com (85.22.154.49)	For push notifications to Apple (APNs), Microsoft (MPNS, WNS), Android (Baidu Push) devices	
HTTPS	443	android.googleapis.com fcm.googleapis.com/fcm/send	Google Firebase Cloud Messaging for Android devices	

Protocol	Port	Destination	Comment	Optional?
APNs with client cert.	443	api.push.apple.com (17.0.0.0/8)	Apple Push Notification service	
HTTPS	443	vpp.itunes.apple.com (17.0.0.0/8)	Apple Volume Purchase Program	Yes
HTTPS	443	itunes.apple.com (17.0.0.0/8)	Apple app identifier search	
HTTPS	443	deviceservices-external.apple.com (17.0.0.0/8)	Apple Activation Lock Bypass for supervised devices	Yes
HTTPS	443	mdmenrollment.apple.com (17.0.0.0/8)	Apple Device Enrollment Program	Yes
HTTPS	443	login.live.com *.notify.windows.com	Windows Push Notification service	
HTTPS	443	www.googleapis.com	Android Enterprise	Yes
HTTPS	443	www.google.com/recaptcha/api/siteverify	Google reCAPTCHA service for password reset and token enrollment	
HTTPS	443	login.microsoftonline.com graph.microsoft.com	Intune app protection, federated authentication with Azure AD	Yes
HTTPS	443	login.teamviewer.com webapi.teamviewer.com start.teamviewer.com	TeamViewer integration	Yes
HTTPS	443	One of the following Sophos Central regions: smc-device-if-cloudstation-eu-west-1.prod.hydra.sophos.com smc-device-if-cloudstation-eu-central-1.prod.hydra.sophos.com smc-device-if-cloudstation-us-west-2.prod.hydra.sophos.com smc-device-if-cloudstation-us-east-2.prod.hydra.sophos.com	Migration from a Sophos Mobile on-premise installation or Sophos Mobile as a Service to Sophos Central	Yes

From the Sophos Mobile server to the following internal hosts

Protocol	Port	Destination	Comment	Optional?
MS SQL	1433	<your database host>	Only if on a different computer than Sophos Mobile	
MySQL	3306			
SMTP plain	25	<your SMTP host>	Enrollment and maintenance emails	
SMTP SSL	465			
SMTP TLS	587			
LDAP	389	<your LDAP host>	To your directory server	Yes
LDAPS	636			
HTTPS	443	<your Exchange server>	For ActiveSync traffic	Yes
HTTPS	443	<your SGN server>	For SGN integration	Yes

From Android devices to the internet

Service	Port	Destination	Comment	Optional?
FCM	5228-5230	internet (all IP blocks listed in Google's ASN 15169)	Google Firebase Cloud Messaging (FCM) for Android devices. IP ranges might change regularly. If you use IP restrictions, check the ASN 15169 document at least monthly.	
HTTPS	443	www.googleapis.com	Zero-touch enrollment	Yes
HTTPS	443	*.samsungknox.com *.secb2b.com *.samsung.com	Samsung Knox Mobile Enrollment	Yes
HTTPS	443	4.sophosxl.net/lookup	Sophos website classification service. Required for Sophos Intercept X for Mobile Web Filtering.	

From iPhones, iPads, and Macs to the internet

Service	Port	Destination	Comment	Optional?
APNs	5223	17.0.0.0/8	Apple Push Notification service for iPhones, iPads, and Macs.	
HTTPS	443	mesu.apple.com	Apple service for available iPhone, iPad, and Mac updates.	Yes ¹
HTTPS	443	push-services.sophosmc.com	Sophos notification service for the Sophos Secure Email iPhone or iPad app.	Yes ²
HTTPS	443	4.sophosxl.net/lookup	Sophos website classification service. Required for Sophos Intercept X for Mobile Web Filtering.	

From Windows and Windows Mobile devices to the internet

Service	Port	Destination	Comment	Optional?
HTTPS	443	*.notify.windows.com *.wns.windows.com *.notify.live.net	Windows Notification Service (WNS) and Microsoft Push Notification Service (MPNS) for Windows devices.	

From Chrome devices to the internet

Service	Port	Destination	Comment	Optional?
HTTPS	443	4.sophosxl.net/lookup	Sophos website classification service. Required for Sophos Chrome Security Web Filtering.	

¹ If not available, Sophos Mobile has no information about updates. For example, compliance rules regarding mandatory updates have no effect.

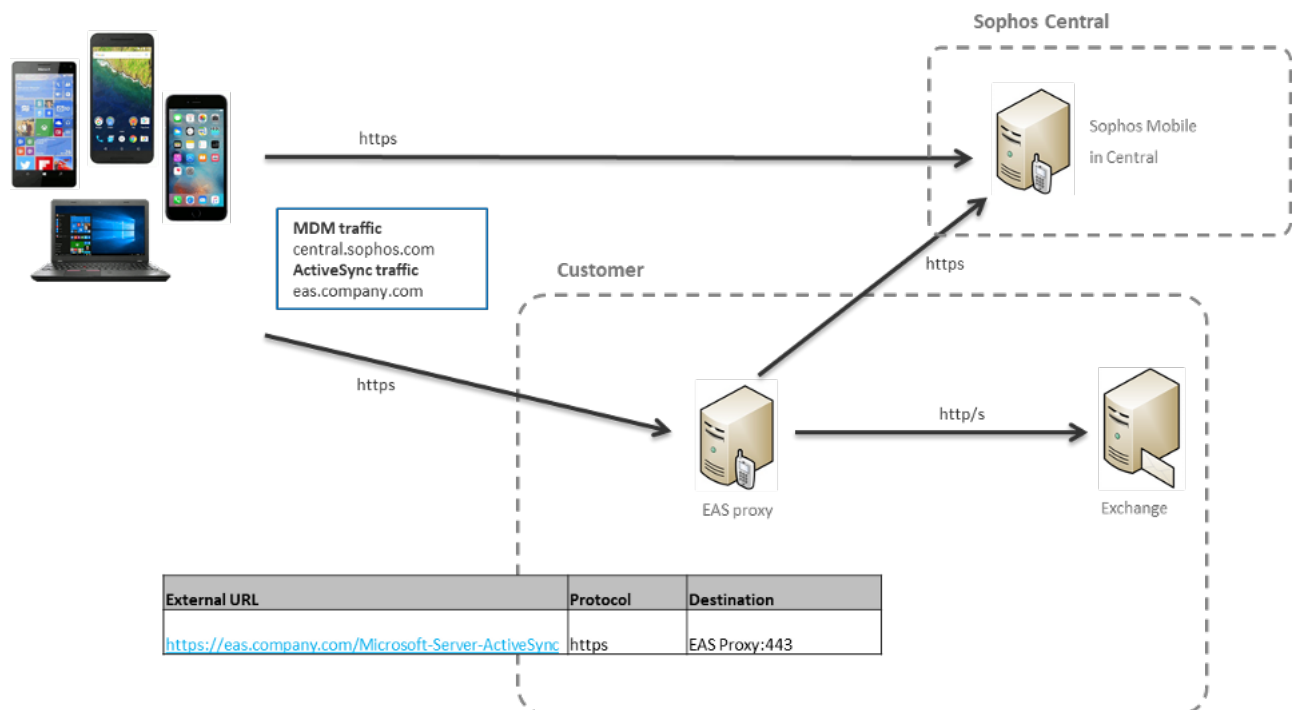
² Required to use Exchange Web Services (EWS) notifications. See [Sophos knowledge base article 127137](#).

4 EAS proxy architecture examples

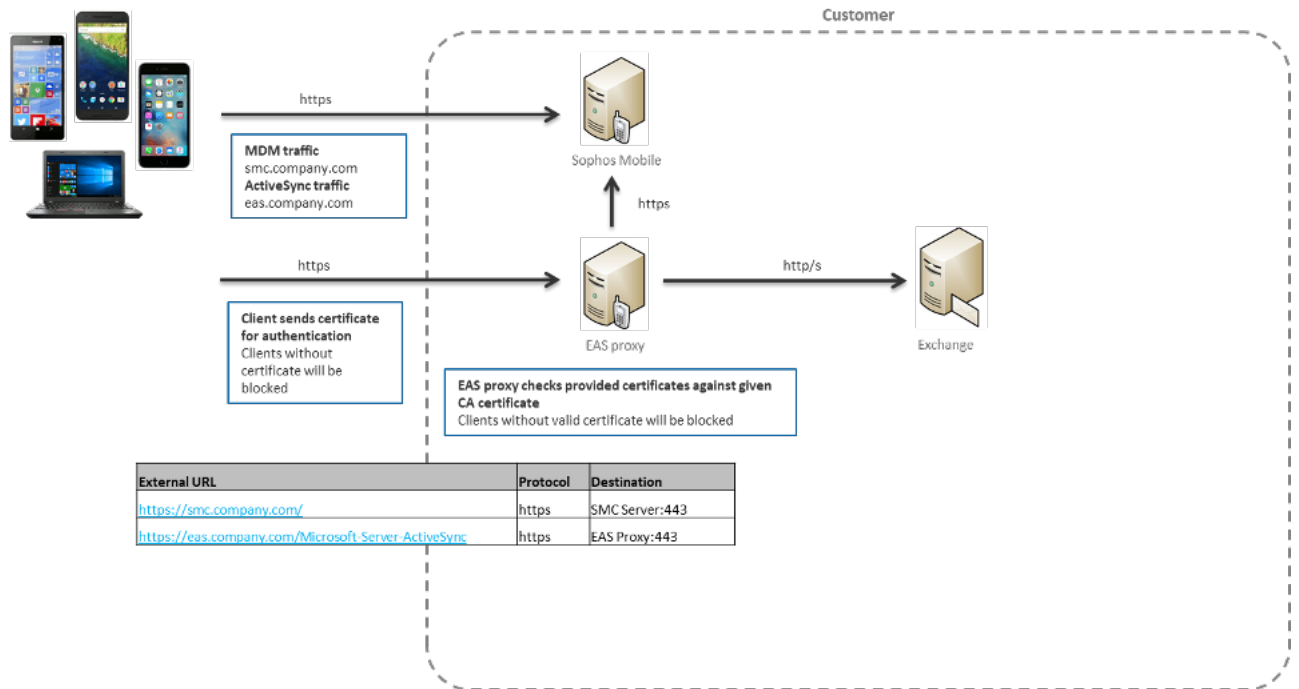
Learn how to integrate the Sophos Mobile standalone EAS proxy into your organization's infrastructure.

For a list of mail servers that the standalone EAS proxy supports, see the [Sophos Mobile release notes](#).

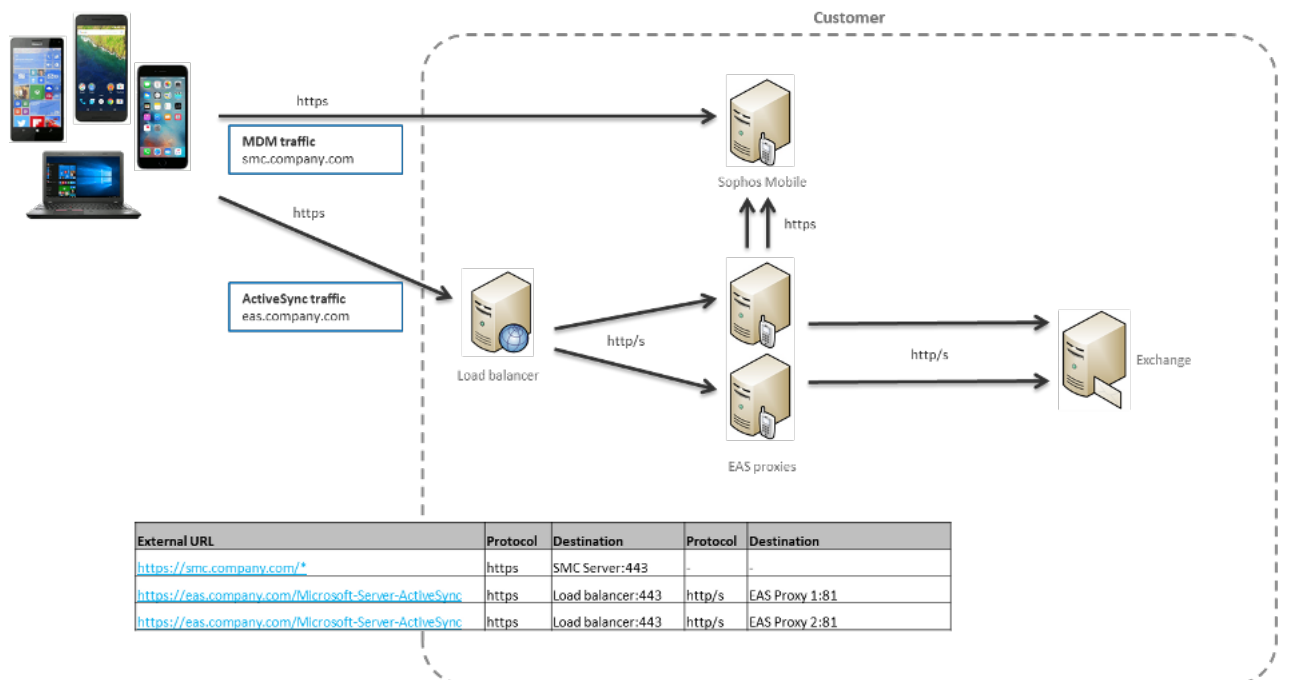
EAS proxy with Sophos Mobile



Client certificate authorization

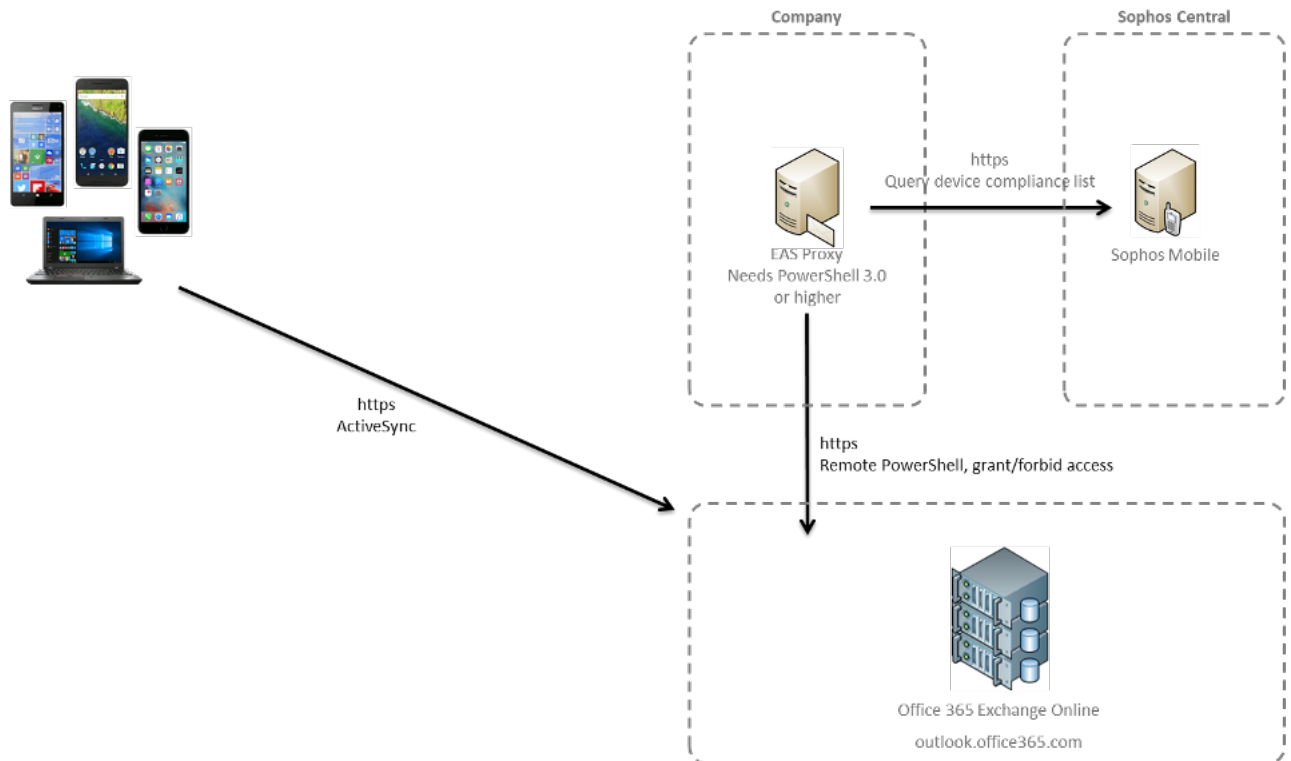


EAS proxy behind a load balancer



PowerShell mode

You can set up a PowerShell connection to an Exchange or an Office 365 server. This means that the EAS proxy service communicates with the email server through PowerShell to control the email access for your managed devices. Email traffic is routed directly from the devices to the email server. It is not routed through a proxy.



Related information

[Sophos Mobile release notes](#)

5 Support

You can find technical support for Sophos products in any of these ways:

- Visit the Sophos Community at community.sophos.com/ and search for other users who are experiencing the same problem.
- Visit the Sophos support knowledge base at www.sophos.com/en-us/support.aspx.
- Download the product documentation at www.sophos.com/en-us/support/documentation.aspx.
- Open a ticket with our support team at <https://secure2.sophos.com/support/contact-support/support-query.aspx>.

6 Legal notices

Copyright © 2020 Sophos Limited. All rights reserved. No part of this publication may be reproduced, stored in a retrieval system, or transmitted, in any form or by any means, electronic, mechanical, photocopying, recording or otherwise unless you are either a valid licensee where the documentation can be reproduced in accordance with the license terms or you otherwise have the prior permission in writing of the copyright owner.

Sophos, Sophos Anti-Virus and SafeGuard are registered trademarks of Sophos Limited, Sophos Group and Utimaco Safeware AG, as applicable. All other product and company names mentioned are trademarks or registered trademarks of their respective owners.